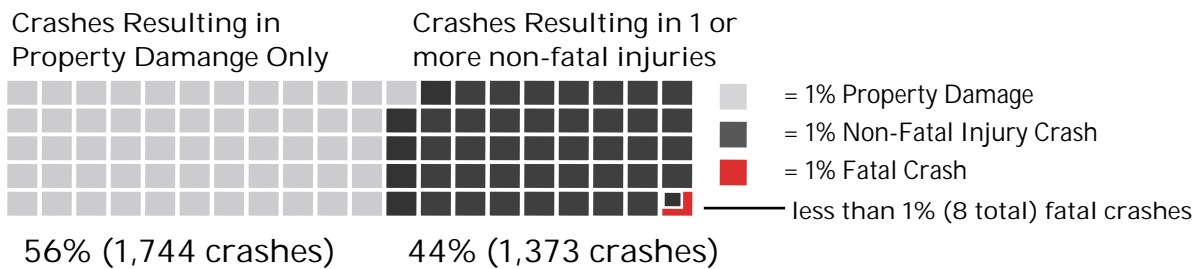


2011 Salem-Keizer Area Motor-Vehicle Crashes

3,125 Total reported motor-vehicle crashes

2,077 Total reported non-fatal injuries

9 Total deaths from 8 fatal crashes



8,430

Total number of persons
in a reported crash

29

Total crashes involving
drugs or alcohol

2,985

Total crashes that were
intersection-related*

Bicycle-Related Crashes

74 Total reported
bicycle-related crashes

69 Non-fatal injuries

0 Fatalities

Pedestrian-Related Crashes

62 Total reported
pedestrian-related crashes

58 Non-fatal injuries

1 Fatality

Intersections* with the Most Crashes (20 or more crashes)

Lancaster Dr. at Market St.
Commercial St. at
Marion St. Bridge

38 tie, top intersection
crash sites for 2011

Mission St. at Hawthorne Ave.
Lancaster Dr. at Sunnyview Rd.

36 tie

Lancaster Dr. at Auburn St.

30

Lancaster Dr. at Center St.

28

Lancaster Dr. at State St.

27

Mission St. at 25th St.

25

Commercial St. at Kuebler Blvd.

23

Center St. at Liberty St.
Lancaster Dr. at Silverton Rd.

22 tie

Mission St. at Airport Rd.

21

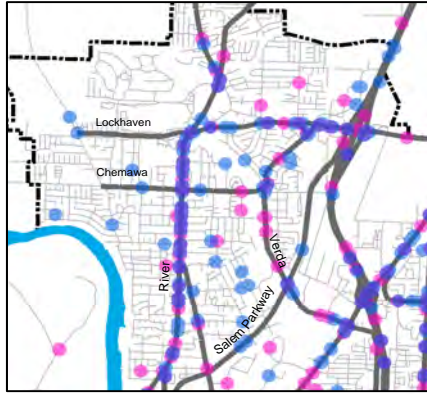
Crash data is provided by the Oregon Department of Transportation Crash Analysis and Reporting Unit on a semi-annual basis.

A crash must be reported by the driver if the crash results in (as of 2004): Death, Bodily injury, Damage to the driver's vehicle is over \$1,500, damage to any vehicle is over \$1,500, and any vehicle is towed from the scene as a result of damage from the accident; damage to any one person's property other than a vehicle involved in the accident is over \$1,500.

*For this analysis, intersections are defined as any crash flagged by ODOT as being a) Intersection-related, b) Within an intersection, or c) within 225 ft. distance from an intersection.

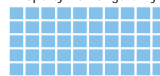
2011 SKATS Crash Locations

Keizer Area



3,125 Total reported motor-vehicle crashes
2,077 Total reported non-fatal injuries
9 Total deaths from 8 fatal crashes

Crashes Resulting in Property Damage Only



Crashes Resulting in 1 or more non-fatal injuries

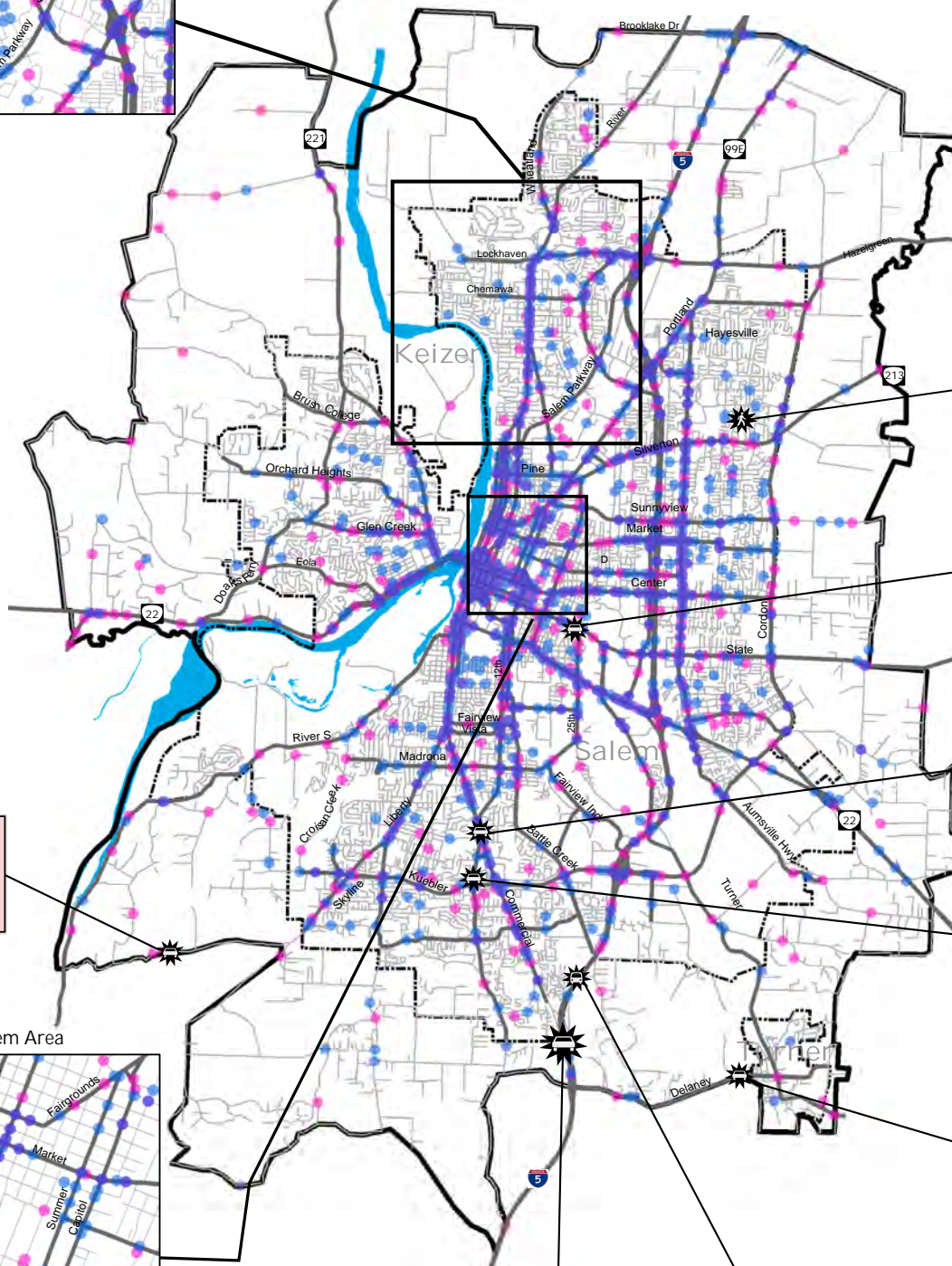


56% (1,744 crashes)

44% (1,373 crashes)

= 1% Property Damage
= 1% Non-Fatal Injury Crash
= 1% Fatal Crash
less than 1% (8 total) fatal crashes

- Property Damage Only
- Non-Fatal Injury
- Mix, Property Damage Only & Non-Fatal Injury
- Fatal Car-Related Crash
- Fatal Motorcycle-Related Crash
- Fatal Pedestrian-Related Crash
- Fatal School Bus-Related Crash
- Existing Bike-Ped Facilities
- Arterials
- Streets
- SKATS TAZ Boundary
- City Boundaries
- Willamette River



1 Pedestrian-Related Fatality
47th Ave. NE
North of Edwin Ct. NE.
Cause:
Driver Inattention/
Excessive Speed

1 Vehicle-Related Fatality
State St. at 24th St.
Cause:
Made Improper
Turning Movement

1 Vehicle-Related Fatality
Commercial St.
at Lansford Dr.
Cause: Fixed Object,
Disregarded
Traffic Signal, Speeding

1 Vehicle-Related Fatality
Boone Rd
at Sunnyside Rd.
Cause: Fixed Object,
Disregarded
Traffic Signal, Speeding

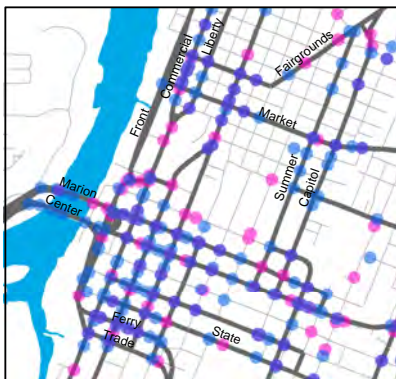
1 Vehicle-Related Fatality
Delaney Rd
at Sunnyside Rd.
Cause: Fixed Object,
Disregarded
Traffic Signal, Speeding

2 Vehicle-Related Fatalities
Interstate 5
.25 miles North of Exit 249
Cause: Overturn,
Driver sleepy/drowsy/tired

1 School Bus-Related Fatality
Interstate 5
1.5 miles North of Exit 249
Cause: Overturn,
Improper Driving

1 Vehicle-Related Fatality
Vitae Springs Rd.
East of Riverdale Rd. S.
Cause:
Fixed Object,
Speeding

Central Downtown Salem Area



2011 SKATS Bicycle & Pedestrian-Related Crash Locations

Bicycle-Related Crashes

74 Total reported bicycle-related crashes

69 Non-fatal injuries

0 Fatalities

Pedestrian-Related Crashes

62 Total reported pedestrian-related crashes

58 Non-fatal injuries

1 Fatality

Bicycle-Related Crashes

1 2

Fatality

Pedestrian-Related Crashes

1 2 3

Fatality

Existing Bike-Ped Facilities

Arterials

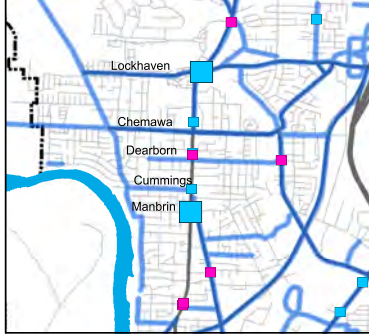
Streets

SKATS TAZ Boundary

City Boundaries

Willamette River

Keizer Area



Downtown Salem Area

